



Daily QA 3™

Daily QA Accelerated

The most advanced and easy to use instrument for routine quality assurance of radiotherapy beams

The Daily QA 3 Advantage

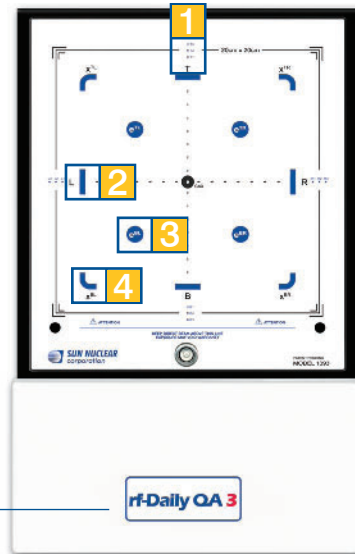
- › Utilizes both ion chambers and diodes for optimal results
- › Simultaneously check:
 - › Output, flatness, symmetry, field size, energy
- › Deliver rotational beams if desired
- › No buildup or flipping required
- › Trend analysis database included
- › Real-time wireless available (rf-Daily QA 3)
 - › Safely keep cables off the treatment room floor

Hardware

- › 13 ion chambers
 - › Output, flatness, symmetry, energy
- › 12 SunPoint™ Diode Detectors
 - › Measure Light:Radiation field coincidence
- › Automatic temperature and pressure correction
- › Integrated buildup-no additional buildup required
- › Real-time measurements

Software

- › Simple two-step operation—'Start' and then 'Record'
- › Real-time display of measured data
- › Green or red light indicates 'Pass' or 'Fail'
- › Sophisticated analysis options with the click of a mouse
- › PDF report export included

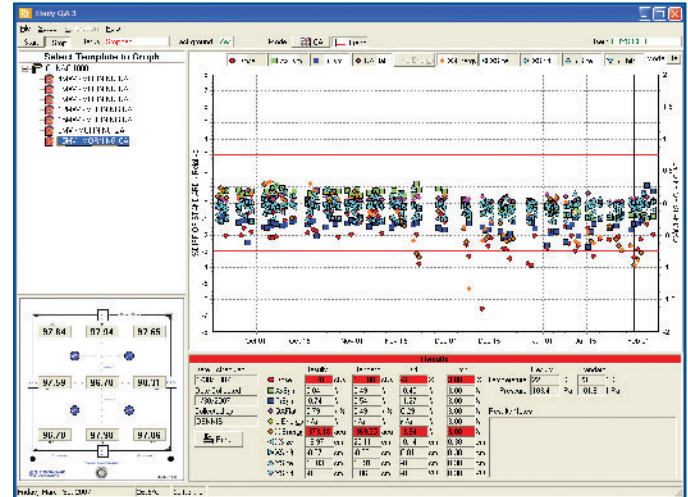
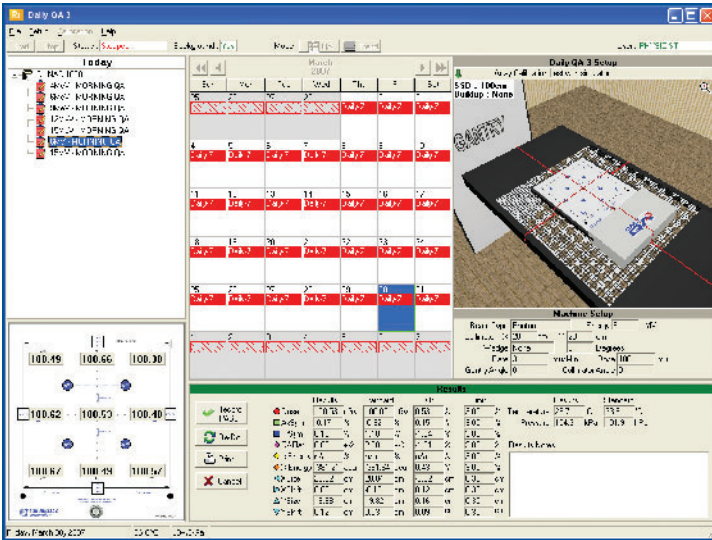


rf-Daily QA3
Real-time wireless available

- 1** Light:Radiation coincidence for a 20 x 20cm field
- 2** Output, flatness, axial and transverse symmetry
- 3** Electron energy
- 4** Photon energy

Use the IMF to position the Daily QA 3 at isocenter and measure at any gantry angle

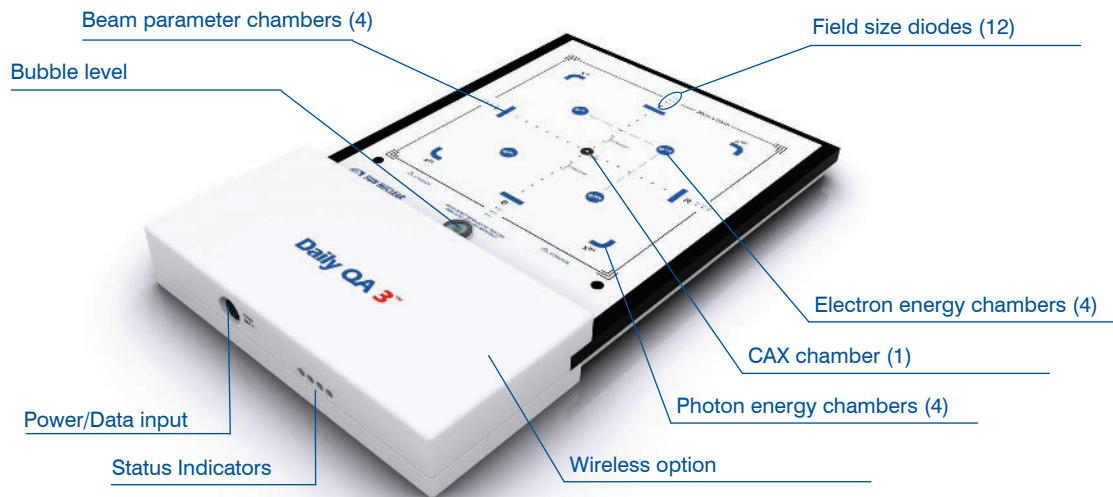




After a measurement is accepted, all collected data is saved for statistical analysis and reporting. Recording data will also initiate the next test. Users can conduct a new test, scheduled or unscheduled, at any time and data is saved in the database.

Daily QA 3 software provides a graphical presentation of data for each template. Users have the option to choose which data parameters to view and over what period to view them. A single measurement instance can be examined by clicking on a data point which corresponds to a particular day.

Features and Specifications



Detector type:	SunPoint Diode Detectors Vented Ion Chambers
Detector quantity:	Diodes: 12 total Chambers: 13 total 1 CAX 4 Primary 4 X-energy 4 e-energy
Detector spacing (mm):	Diodes: 5.0
Chamber active area (cm ²):	Electron: 0.6 Photon: 0.3
Field size (cm):	20.0 x 20.0
Inherent buildup (g/cm ²):	Chambers: 1.0 ± 0.1

Inherent backscatter (g/cm ²):	2.3
Electron energy attenuation:	Air, Cu, Al, Fe
Radiation measured:	• Electrons, 4MeV to 25MeV • Photons, Co-60 to 25MV
rf Frequency (rf-Daily QA 3):	2.400 to 2.485GHz
Operating system:	Windows 2000, XP 32-bit, or Vista 32-bit
Dimensions / Weight:	25.6 x 40.8 x 4.6cm / 5.7kg
Number of connection cables:	Single power / data cable



All data used is best available at time of publication. Data is subject to change without notice. All Content ©2010, Sun Nuclear Corporation. All Rights Reserved.