

MapPHAN™

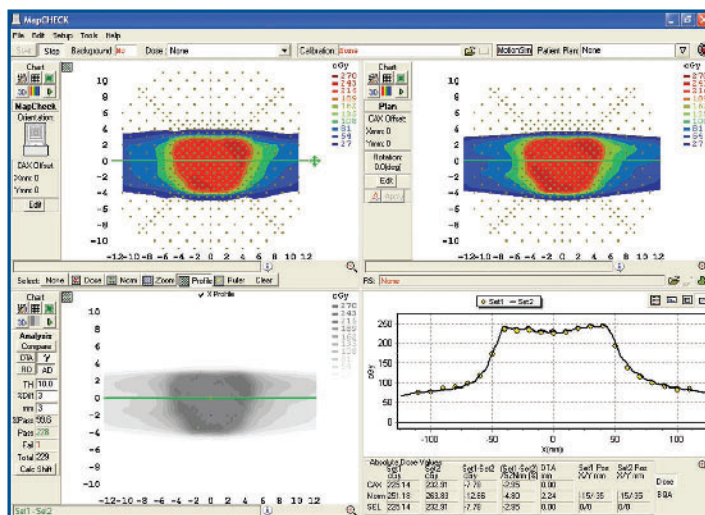
Rotational Dosimetry Delivered

A homogenous water equivalent phantom that holds MapCHECK™ or MapCHECK 2™ at isocenter for Rotational Dosimetry

What is MapPHAN?

MapPHAN is a water equivalent phantom that holds any MapCHECK or MapCHECK 2 at isocenter for rotational dosimetry. Successfully tested with RapidArc™, TomoTherapy®, and VMAT, MapPHAN offers users an accurate and convenient rotational dosimetry solution. Coronal and sagittal measurements are supported, and any new or existing MapCHECK or MapCHECK 2 user can upgrade to MapPHAN.

Prostate



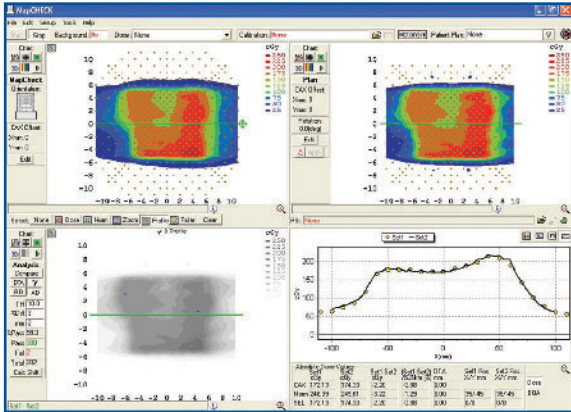
Analyzed at 3%/3mm gamma in absolute dose

Clinical Proof

MapCHECK software comparing a prostate case demonstrating a 99.6% passing rate. Further examples:

Percent Pass	Machine
98.0%	RapidArc
97.7%	RapidArc
99.6%	RapidArc
92.7%	RapidArc
99.6%	TomoTherapy
98.9%	VMAT

Head and Neck

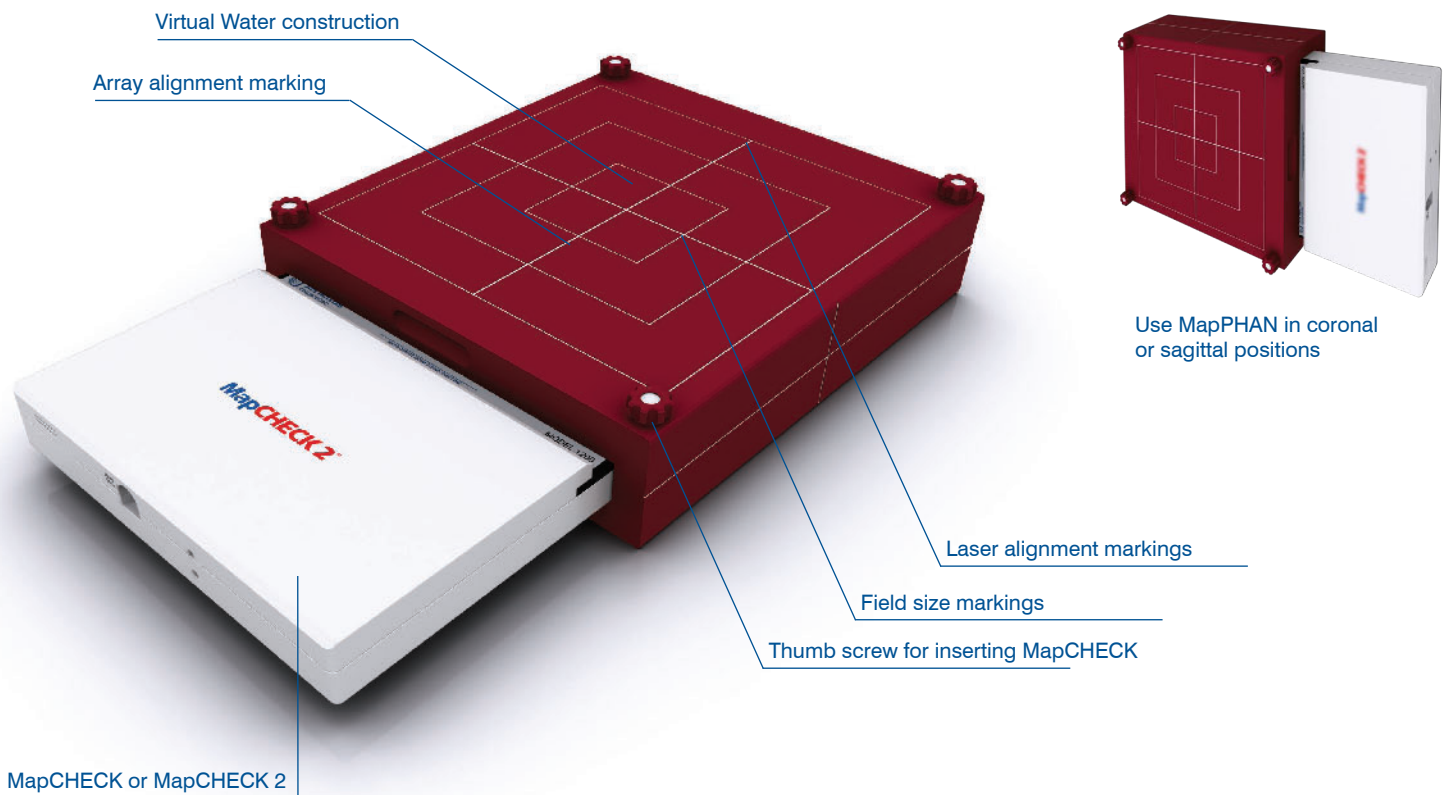


Analyzed at 3%/3mm gamma in absolute dose

MapCHECK software comparing a head/neck case demonstrating a 99.3% passing rate. Further examples:

Percent Pass	Machine
92.3%	RapidArc
98.5%	RapidArc
94.5%	RapidArc
99.3%	RapidArc
98.8%	TomoTherapy
98.5%	TomoTherapy

Features and Specifications



Use MapPHAN in coronal or sagittal positions

MapCHECK with MapPHAN

Construction:	Virtual Water
Available depths (cm):	5.0, 10.0
Area (cm ²):	30.0 x 31.0
Weight (kg):	6.0 (5cm) 15.0 (10cm)

MapCHECK 2 with MapPHAN-MC2

Construction:	Virtual Water
Available depths (cm):	5.0, 10.0
Area (cm ²):	35.0 x 38.0
Weight (kg):	8.0 (5cm) 21.0 (10cm)