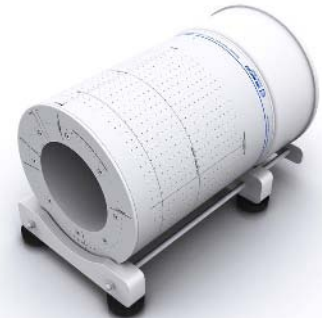


VMAT QA and Dosimetry



ArcCHECK™ - 4D Rotational Delivery QA

- Verify dose plans, VMAT QA, IMRT QA
- 1386 precision SunPoint™ Diode Detectors
- HeliGrid™ helical array geometry
- 50ms update frequency
- Optional central cavity detector insert
- Lightweight (16kg) and simple to setup



MapCHECK 2™ - Raising the Bar in IMRT QA

- Verify dose plans, VMAT QA, IMRT QA, MLC QA, beam QA, gating QA*, dose based EPID IMRT QA**
- 1527 precision SunPoint Diode Detectors
- 32 x 26cm field size
- 7mm uniform detector spacing
- Active detector area: 0.8 x 0.8mm (0.64mm²)
- 50ms update frequency



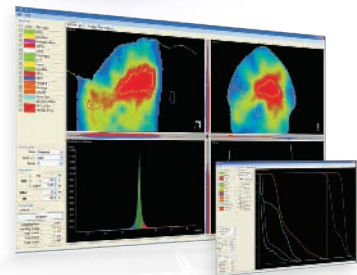
MapPHAN™ - Rotational Dosimetry Delivered

- Clinically proven precision and accuracy for Elekta VMAT
- Options for MapCHECK™ and MapCHECK 2
- Virtual Water™ construction
- 5 and 10cm depths available



3DVH™ - Complete 3D Patient Dose Analysis

- 3D and DVH analysis on patient geometry
- Quantitative multi-modality DICOM plan inter-comparisons
- Uses patent pending method-PDP™ Planned Dose Perturbation
 - > No secondary dose calculation



All data used is best available at time of publication. Data is subject to change without notice. All Content ©2010, Sun Nuclear Corporation. All Rights Reserved. Elekta, VMAT and it's logo are all trademarks of Elekta AB.