

# 1D SCANNER™

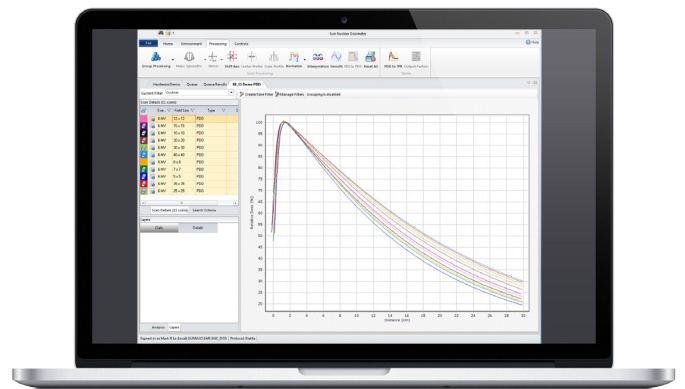
## Accurate Point Dose and PDD Dosimetry

1D SCANNER is a 1D water tank for dosimetry measurements in water including output factors, dose calibrations, annual, and routine QA. Setup subjectivity is reduced with a water surface detection feature that automatically sets the dosimetry detector at the water surface.



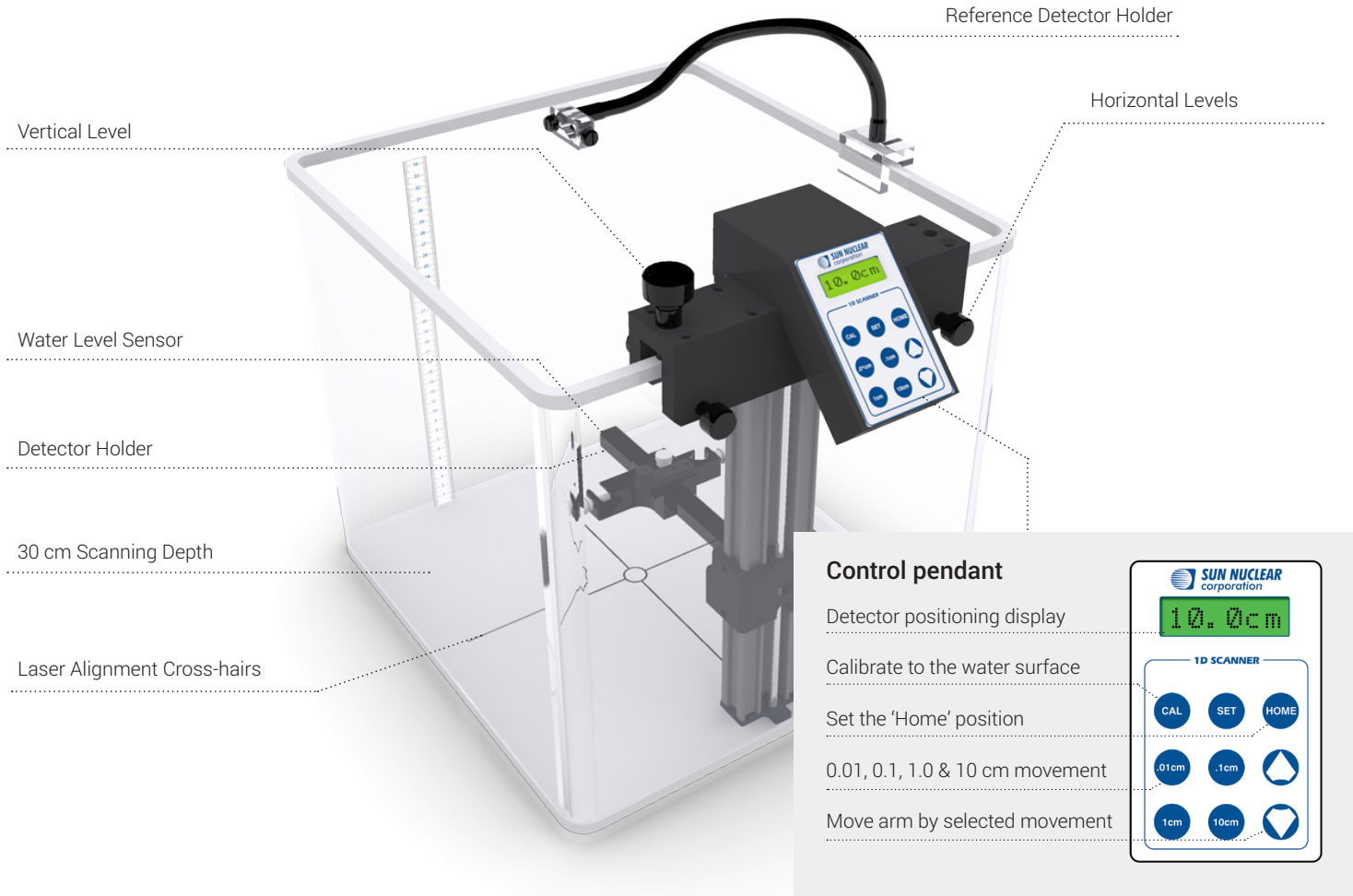
### Features and Benefits

- Use for output factors, dose calibrations, annual (TG-51) and routine QA
- Automatic water level detection places the detector at the water surface
- Multi-function pendant and PC software control included
- 30 cm scan and detector positioning depth
- Accommodates all common electron cones
- Horizontal ruler for off-axis detector positioning
- Farmer type, universal, and reference detector holders included
- Scanning software option available
- Leveling platform available



Collect PDD curves with optional SNC Dosimetry™ software

# Features



# Specifications

Inner dimensions L/W/H (cm):	35.0 x 39.0 x 36.2
Exterior dimensions L/W/H (cm):	37.6 x 40.6 x 36.8
Interior volume:	50 liters at 35 cm depth
Weight empty with arm (kg):	10.4
Arm positioning increments (cm):	0.01, 0.1, 1.0 & 10.0
Arm positioning accuracy (cm):	± 0.01
Scan depth maximum (cm):	30.0
Operating system:	Windows 2000, XP, Vista, or 7
Number of connection cables:	Single power/data cable

# PC Electrometer™

The 1D SCANNER makes the perfect measurement solution when paired with the reference-class PC Electrometer

