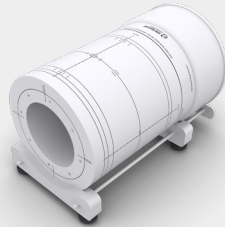


# QA for MR-Guided Radiation Therapy



## Patient QA

### ArcCHECK™ - MR



**Supporting Literature:**

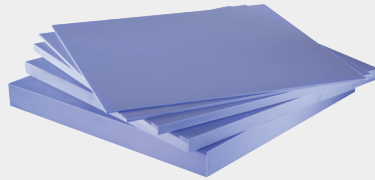
**Performance of a Cylindrical Diode Array for use in a 1.5 T MR-linac**

*Houweling A. et al., Physics in Medicine and Biology, 61(3) (2014)*

**Patient-Specific Quality Assurance for the delivery of 60Co Intensity Modulated Radiation Therapy Subject to a 0.35-T Lateral Magnetic Field**

*Li HH. et al., Int J Radiat Oncol Biol Phys, 91(1):65-72 (2015)*

### Solid Water® HE



## Machine QA

### IC PROFILER™ - MR

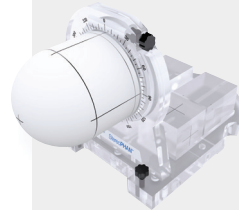


**Supporting Literature:**

**Performance of a Multi-axis Ionization Chamber Array in a 1.5T Magnetic Field**

*Smit K. et al., Physics in Medicine and Biology, 59(7) (2014)*

### StereoPHAN™



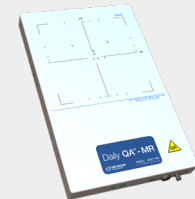
MRI Signal Generator StereoPHAN insert

### MICRO+™ - MR



### Daily QA™ - MR

Daily measurements of output, transverse & axial symmetry



**Coming in 2019**

## Compatible with Elekta and ViewRay® Technologies

	ArcCHECK® - MR	IC PROFILER™ - MR
Able to be bundled with orders	✓	✓
Used by Elekta and ViewRay Development and Engineering Teams	✓	✓
Compatible with 0.35 and 1.5T treatment delivery systems	✓	✓
Co-developed by ViewRay Manufacturing & Physics teams	✓	✓
Compatible with ViewRay-designed mounting stand (pictured right)		✓

