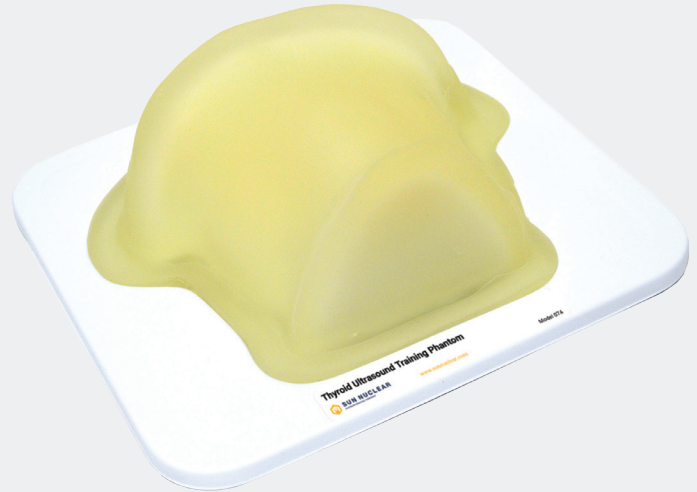




Thyroid Ultrasound Training Phantom

074

- Enables skill development and demonstration of thyroid ultrasound and biopsy procedures
- Provides a low-stress educational environment for hands-on training without needing live patients



Thyroid nodules occur in approximately half of the global population with incidence increasing with age. Ultrasound-guided thyroid biopsy procedures have been shown to provide greater diagnostic accuracy than freehand techniques.¹ Access to patients for training can be limited, so the Thyroid Ultrasound Training Phantom supports competency development in thyroid ultrasound and biopsy techniques.

The phantom incorporates a slightly enlarged thyroid gland within an anatomically representative neck, with the chin and clavicle serving as external landmarks and the trachea, internal jugular vein, and common carotid artery provided as internal anatomical landmarks. The phantom supports identification and interventional training for different thyroid nodule types, with each thyroid lobe containing one simulated cyst and one isoechoic, stiff lesion.

Fine needle aspiration may be performed on each simulated cyst, while the stiff lesions support visualization with sonoelastography and are suitable for biopsy. The lesions are isoechoic to the thyroid gland on standard B-mode imaging.

Key Benefits

- Supports teaching, training, and clinical competency assessment in a non-stressful environment
- Enables testing and demonstration of new devices
- External and internal anatomy landmarks support realistic thyroid ultrasound imaging
- Z-Skin™ elastomer skin simulates the elastic characteristics of skin during scanning and biopsy
- Internal components constructed from tissue-mimicking Zerdine® hydrogels

¹ Cerutti JM, Delcelo R, Amadei MJ, Nakabashi C, Maciel RM, Peterson B, Shoemaker J, Riggins GJ. "A preoperative diagnostic test that distinguishes benign from malignant thyroid carcinoma based on gene expression." J Clin Invest. 2004 Apr; 113(8): 1234-42.

Thyroid Training Phantom

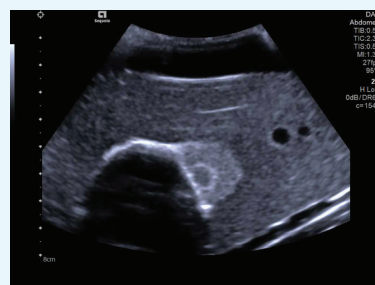
Enables skill development and demonstration of thyroid ultrasound and biopsy procedures

Specifications

Overall Dimensions	31 x 32.5 cm (12.2" x 13")
Weight	4.3 kg (9.4 lbs)
Materials	Zerdine hydrogels Z-Skin elastomer skin
Anatomy	Thyroid gland (35 cc nominal volume) Internal jugular vein Common carotid artery Trachea Two cysts and two isoechoic stiff lesions in thyroid lobes
Phantom Includes	Support tray Surface conditioner powder



Simple Cyst



Note: If any device has been inserted into the phantom, the warranty does not cover claims related to material desiccation or needle tracking.