

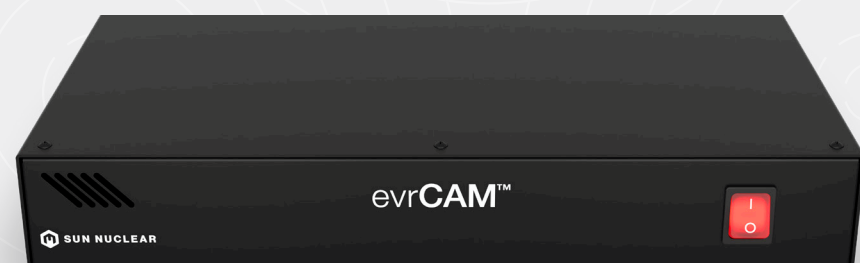
evrCAM™

Radiation-Tolerant
Pan-Tilt-Zoom Camera



SUN NUCLEAR
A MIRION MEDICAL COMPANY

Clear Video. Radiation Resilience. Seamless Integration.



Monitor Patients with Confidence

Engineered to endure radiation environments, evrCAM™ delivers sharp, high-resolution video with a service life up to three times longer than standard CCTV systems.

Designed for vaults using either analog (Varian®) or digital (Elekta®) camera solutions, evrCAM provides clinicians with sharp visuals during critical treatment moments — eliminating pixelated and damaged images and enhancing patient observation. Built to withstand cumulative radiation exposure up to 200 Gy and maintain performance in low-light environments, evrCAM integrates easily into existing infrastructure.

Radiation Performance

- Withstands up to 200 Gy of cumulative exposure
- Maintains image quality with minimal image degradation up to 100 Gy*
- Shielded against neutron and photon radiation

Seamless Compatibility

- Integrates with existing wiring, controllers, and camera viewing systems (Cat5e or equivalent cabling)
- Compatible with most video management systems (VMS)
- Mounts to wall or ceiling with a twist-lock design for fast, secure installation

Clarity & Control

- Visibility in low-light conditions
- Full pan-tilt zoom (PTZ)
- High-resolution color and black-and-white video with auto-detection stream

Reliability & Support

- Certified to IEC 60601-1-2, FCC, and CE
- Backed by one-year warranty and expert support

*Tested using 6 MV and 15 MV beam spectra

Easy Integration into Analog and Digital Infrastructures

evrCAM is easy to install, simple to operate, and built to work with both analog and digital systems. It offers a flexible solution for a range of clinical environments.

Analog Solution

- evrCAM connects directly to existing analog video displays via CVBS or TVI interface
- Compatible with Varian® Medical Systems TrueBeam®, VitalBeam™ and similar treatment delivery systems
- Connects directly to existing coaxial (video) and twisted pair cabling
- Includes hardware for wall mounting via pendant or flush ceiling installation



Digital Solution

- evrCAM interfaces with digital infrastructures using a Digital Controller Box (sold separately)
 - Compatible with Tyco ExacqVision® Server
- A

B

C

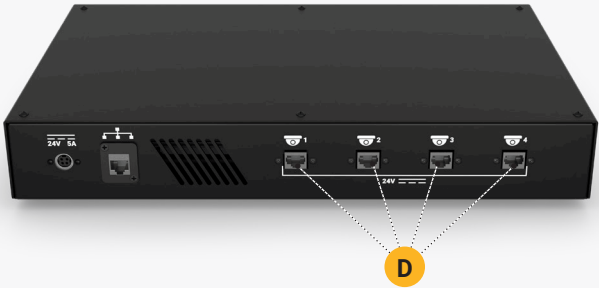
D

RJ45/50 plug-and-play connector supports Ethernet-based video, power, and data interface

Cable access port enables alternate video and power connections to the camera

Includes hardware for wall mounting via pendant or flush ceiling installation

Supports up to 4 cameras per controller box



Specifications

evrCAM Camera

Radiation Tolerance	200 Gy (20 krad)
PTZ Protocol	Pelco-D (RS-485)
Size, WxDxH	161 x 161 x 205 mm (6.3 x 6.3 x 8.1 in)
Size with pendant, WxDxH	161 x 205 x 254 mm (6.3 x 8.1 x 10 in)
Camera Weight	1.8 kg (4 lbs)
Pendant Weight	0.1 kg (0.3 lbs)

Mechanical & Video

Resolution	2.1 MP
Video Output	TVI: 1920 x 1080p (30/25 fps) CVBS: 720H
Minimum illumination	<0.1 lux (color & black/white)
S/N Ratio	>52 dB
Lens Aperture (f/#)	2.8
Focal length	5 - 64 mm
Brightness	Manual or Automatic
Zoom	12X optical, 12X digital, 144X total
Pan Range	360° continuous
Tilt Range	0° to 180°
Max Speed	360°/s
Screen Flip	Automatic at 90° tilt
Presets	>200 supported

Electrical

Local Power (barrel, bypass)	DC 12V (±10%), 700 mA max
Remote Power (RJ45 or RJ50)	DC 24V (±25%)
Cabling	CAT5e or better (<150 ft), requires controller for IP
Data Communication	RS-485
Baud Rate	2400 - 57600 bps
Camera Address	001 - 255 (DIP switch)
Protocol	Pelco-D

Digital Controller (optional)

Digital Controller Size, WxDxH	412 x 254 x 71 mm (16.2" x 10" x 2.8")
Digital Controller Weight	2.6 kg (5.7 lbs)
Power Source	DC 24V
Camera Connections	RJ45 (Supports up to 4 cameras)
Server/PC Connector	1x (RJ45)

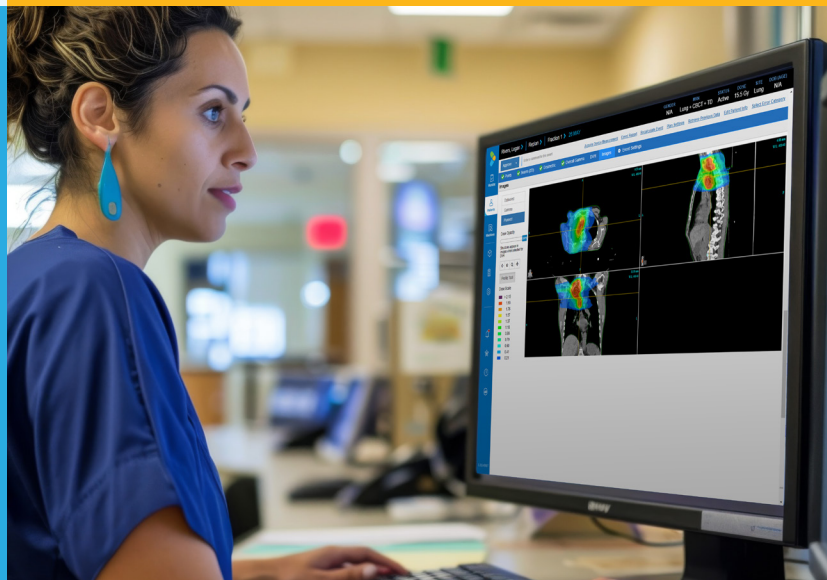
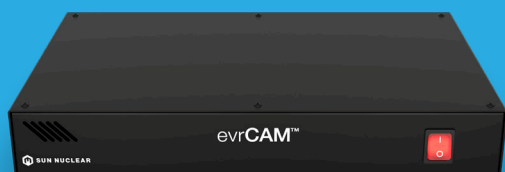
Environmental & Compliance

Certifications	CE, FCC, IEC 60601-1-2 (Medical EMC), IEC 62368-1
Operating Temperature	0 - 50° C
Operating Relative Humidity	20-80%

Part Numbers

evrCAM PTZ Camera	806175
evrCAM Digital Controller	806172





**Sun Nuclear
Headquarters (US)**

Phone

+1 (321) 259-6862

Address

3275 Suntree Blvd,
Melbourne, FL 32940

**Sun Nuclear
Virginia (US)**

Phone

+1 (757) 855-2765

Address

900 Asbury Ave
Norfolk, VA 23513

**Sun Nuclear
Germany**

Phone

T +49 6102 50495 00

F +49 6102 50495 29

Address

Landsberger Str. 318 80687
München, Germany

**SunServices™
Center - EMEA**

Phone

+31 20 399 90 41

Address

Verlengde Poolseweg 36
4818 CL Breda, The Netherlands



SUN NUCLEAR
A MIRION MEDICAL COMPANY

©2025 Mirion Technologies, Inc. or its affiliates. All rights reserved. Sun Nuclear, the Sun Nuclear logo, and other trade names of Sun Nuclear products listed herein are registered trademarks or trademarks of Mirion Technologies, Inc. or its affiliates in the United States and other countries. Third party trademarks mentioned are the property of their respective owners. All Rights Reserved. All data used is best available at time of publication. Data is subject to change without notice.

MKTG-4706 evrCAM Datasheet