

Daily QA™ 4 Pro

Daily Machine QA in a Single, Indexed Device

- Faster setup
- Fewer room entries
- More consistent workflows



Daily QA 4 Pro simplifies daily machine QA by combining dosimetry and imaging/positioning checks into a single indexed, imageable device. This unified approach supports faster setup, fewer room entries, and more consistent daily workflows.

Unify Imaging & Dosimetry Into One Workflow

- Single, indexed device supports daily QA, combining dosimetry and positioning verification via imaging (CBCT, kV/kV, MV/ MV) within one setup
- Incorporates Winston–Lutz and daily isocenter imaging checks, along with SGRT-based positioning verification, without requiring separate tools or phantoms
- Enables reproducibility and SGRT confidence via indexed, immobilized positioning setup and repeatable measurement geometry

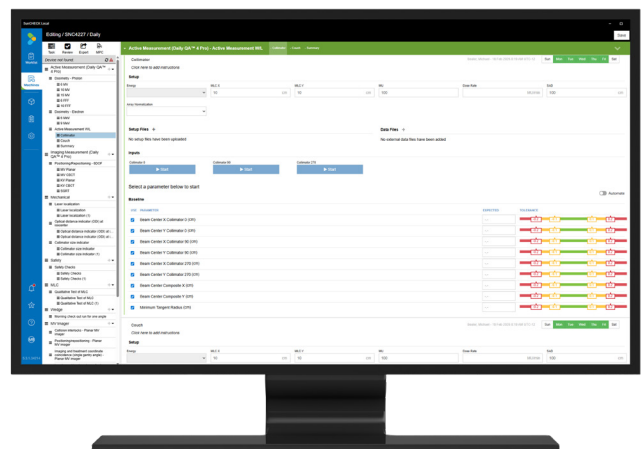
Automate Capture & Reporting in SunCHECK® v6.0*

- Enables automated data capture and consistent documentation with direct SunCHECK integration to support compliance and accreditation
- Supports flexible local or enterprise-wide deployment to fit department and IT requirements

* SunCHECK Version 6.0 or higher required

Drive Efficient QA Coverage with One Device

- Consolidates morning QA tasks to reduce room entries, device changes, and manual steps
- Supports consistent daily execution, including multi-vendor machines, across beam and imaging checks
- Provides comprehensive QA coverage within a single setup, including output and profile constancy, photon/ electron energy, field size/shift, and imaging/positioning



Direct integration via SunCHECK Machine Daily Software

Specifications

Category	Characteristic	Specification
Detectors	Ionization Chambers	Four (4) vented, fully guarded, parallel plate style ion chambers. Located at 1.77 cm from CAX along each 45° diagonal axis.
	Unattenuated Diodes	225 SunPoint® 2 diodes (detectors on the side boards are in the Y and Z axes and at 45° (X,Y plane) axes)
	Attenuated Diodes	24 SunPoint 2 diodes – Steel (photons), Aluminum (electrons)
Imaging Targets	Number	Eight (8) 3 mm tungsten carbide spheres
Performance	Symmetry Constancy Accuracy	0.1% for 100 cGy delivery
	Dose Constancy Accuracy	0.2%
	Flatness Constancy Accuracy	0.1% for 100 cGy delivery
	Electron Beam Quality Constancy Accuracy	0.025 cm for 100 cGy delivery for all available metrics
	Photon Beam Quality Constancy Accuracy	0.25% for 100 cGy delivery for either D10 or TPR
Energies	Photon Energy Range	4 MV, 6 MV, 10 MV, 15 MV, 18 MV, 20 MV, 23 MV, 25 MV, 2.5FFF, 6FFF, 10FFF, Cobalt-60
	Electron Energy Range	4 MeV, 6 MeV, 9 MeV, 12 MeV, 15 MeV, 16 MeV, 18 MeV, 20 MeV, 22 MeV, 25 MeV
Dose Delivery	Dose Rate	0.333 cGy/s to 100 cGy/s
	Pulse Repetition Rate	10 Hz to 400 Hz
Fields	Dose Constancy	5 cm × 5 cm to 20 cm × 20 cm
	Flatness and Symmetry	2 cm × 2 cm to 20 cm × 20 cm
Physical	Weight	6.2 kg.
	Dimensions	30 cm × 50 cm × 6 cm
SGRT Performance	–	< 1.0 degrees, < 0.5 mm
Wireless	Transceiver Frequency	2.4 GHz
	Base Station Dimensions	7 cm × 12.3 cm × 3.5 cm
	Battery Operating Time	5 hours
	Charging Time	3 hr (20% to 80%)
Software	SunCHECK Local & SunCHECK v6.0	Deployment via laptop and workstation (local) or Enterprise platform

Optional Accessories

